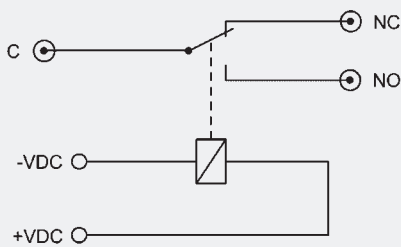


Series RU2

- Change over switch 2/1
- Low power consumption
- SMA connectors (others on request)
- Filtered control lines
- Compact dimensions



Configuration SPDT



Technical data (guaranteed values at +25 °C)

Frequency range	DC to 1000 MHz
Insulation	60 dB min. / 65 dB typ.
Insertion loss	0,4 dB max. / 0,25 dB typ.
VSWR	1,5 : 1 max. / 1,4 : 1 typ.
Impedance	50 Ω
Maximum RF-power	10 W (cold switching)
Switching time	15 ms
Life cycles	10 ⁶ cycles
RF-connectors	SMA female
Options	Free-wheeling diode, front panel, latching

Model designation

RU2 - 5 1 4 2 - S1

Options:

- 1 = Standard
- 2 = Free-wheeling diode
- 3 = Front panel
- 4 = Latching

Power supply:

- 0 = 5 V DC (50 mA)
- 1 = 12 V DC (20 mA)
- 2 = 24 V DC (10 mA)

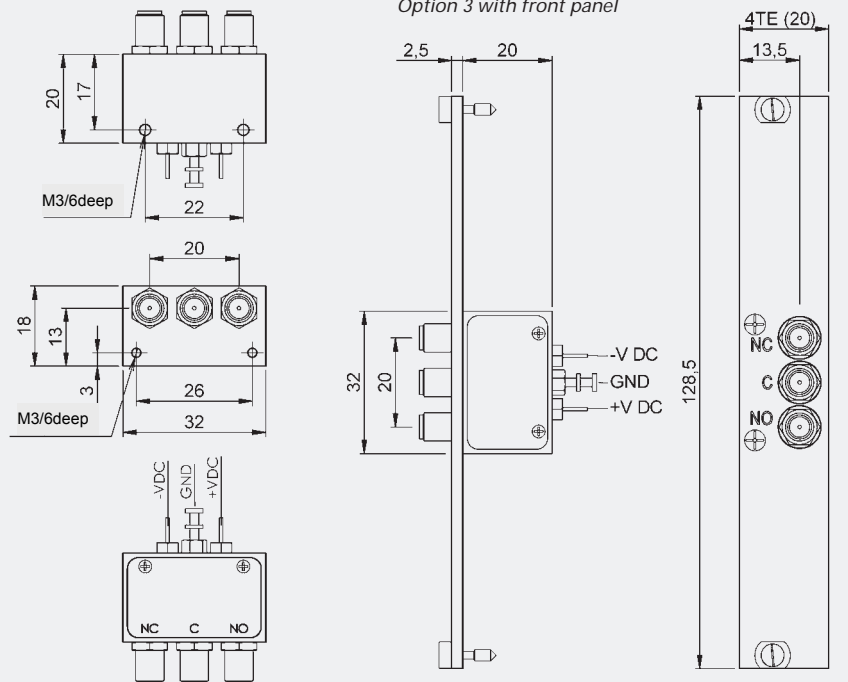
RF-connectors SMA

Frequency range
DC to 1000 MHz

Impedance = 50 Ω

RU2 series
(change over switch)

Dimensions, serie RU2



All dimensions in mm