

## EB series

19" module racks, which are holding highest mechanical stability. A speciality are the full length extruded side-pieces profiles. These general-purposed module racks are suitable to built-in assemblies based on the standard card format to DIN 41494 part 1 -5. Assemblies and Europe cards can be built-in in the front and/or in the back.

Generally, the module rack includes two handles.

### Material

Aluminum

### Surface

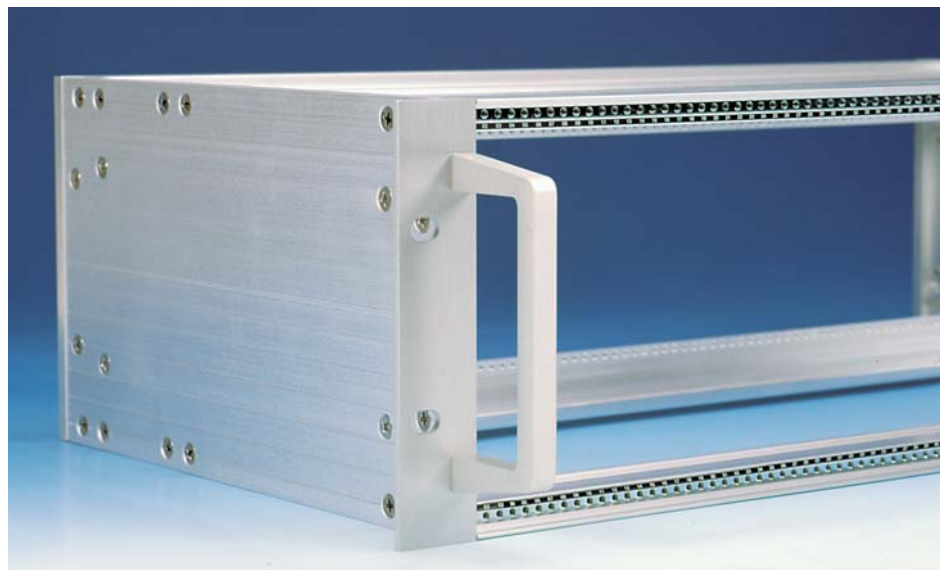
White alodined.

Offers best design as well as additional surface protection.

### Content of delivery

As an unmounted kit including side-pieces with height rows and termination extrusions, horizontal extrusions, female multi-point connectors, threaded rails M2,5, handles and mounting accessories.

Part front panel and rear panel are not included but can be separately ordered. (see technical information)



### Standard design

Design	width B (mm)	b (mm)	depth T (mm)	t (mm)	height H (mm)	hs (mm)	e (mm)
EB3-245	447,4	426,72	244,6	232,6	3HU = 132,5	112,5	57,1
EB3-305	447,4	426,72	304,6	292,6	3HU = 132,5	112,5	57,1
EB3-425	447,4	426,72	424,6	412,6	3HU = 132,5	112,5	57,1
EB3-545	447,4	426,72	544,6	532,6	3HU = 132,5	112,5	57,1
EB6-245	447,4	426,72	244,6	232,6	6HU = 265,9	245,9	190,5
EB6-305	447,4	426,72	304,6	292,6	6HU = 265,9	245,9	190,5
EB6-425	447,4	426,72	424,6	412,6	6HU = 265,9	245,9	190,5
EB6-545	447,4	426,72	544,6	532,6	6HU = 265,9	245,9	190,5

### Configuration of model designation

EB3-245 - 1 - 1 - X

Special surface treatment on request

Equipment back

0 = without equipment

1 = 3 HU

for a card format 100 x 160 mm

2 = 3 HU

for a card format 100 x 220 mm

3 = 6 HU for a card format

233,4 x 160 mm

4 = 6 HU

for a card format 233,4 x 220 mm

5 = 6 HU for two cards with

100 x 160 mm

6 = 6 HU for two cards with

100 x 220 mm

Equipment front

0 = without equipment

1 = 3 HU for a card format

100 x 160 mm

2 = 3 HU

for a card format 100 x 220 mm

3 = 6 HU

for a card format 233,4 x 160 mm

4 = 6 HU

for a card format 233,4 x 220 mm

5 = 6 HU

or two cards with 100 x 160 mm

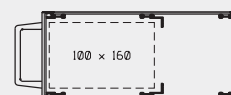
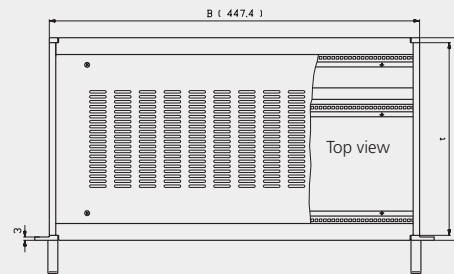
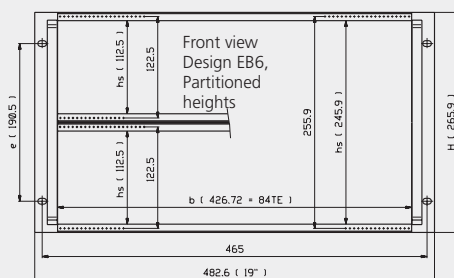
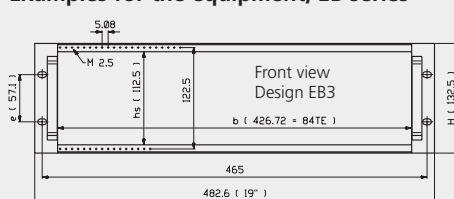
6 = 6 HU

for two cards with 100 x 220 mm

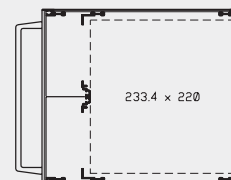
Standard design

(see design general view)

### Examples for the equipment, EB series



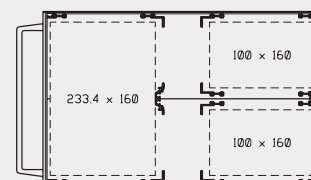
EB3-305-1-0



EB6-305-0-4



EB3-425-1-1



EB6-425-3-5

Dimensions in mm