

AG/AGO series

The RF-enclosures of AG and AGO series are precision enclosures milled out of a full aluminum block. Their characteristic is a circuit board mounted with clamping screws, so drillings are not necessary in the circuit board. These enclosures are locked with multiple bolted, 2 mm strong covers, which are alternatively flush locked or have a mounting flange exceeding 10 mm on each side.

Dimensions

The enclosures of AG/AGO series are available in four different sizes, height and width remain always the same and only the length will change (please note the drawing on page 6).

Content of delivery

The enclosures are delivered according to the defined order version, including all necessary accessories. (enclosures with cover/bottom, screws for the cover/bottom and circuit board mounting as well as accessories manufactured.)

Service

We do modificate enclosures, according to customer specifications, e.g. drill-hole pattern and modified dimensions.

Application domain

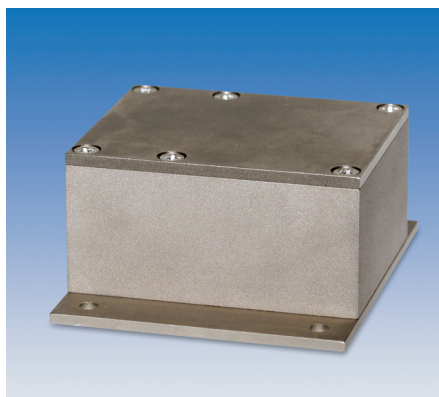
Amplifiers (modules), oscillators, attenuator, etc.



Versions



Type 1
With standard mounting hole-pattern (in opposite of the UC-series only for one feed through filter DF2)



Type 2
without mounting hole

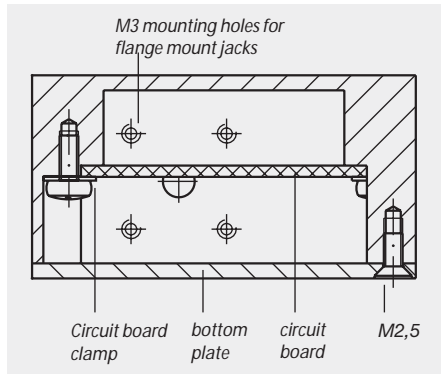


Type 3
With standard drill hole-pattern, RF-connectors, optional with fastening as well as one ground connector and one feed through filter DF2

Structure and difference

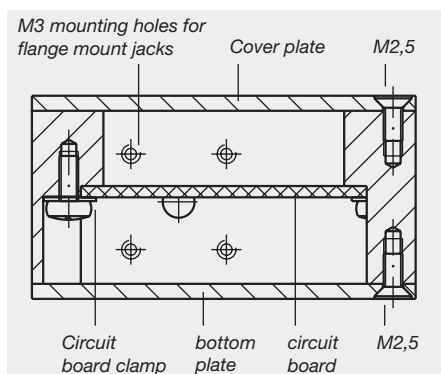
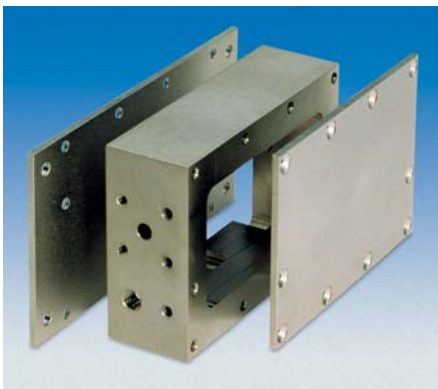
AG series

The circuit board is only accessible from one side after mounting.

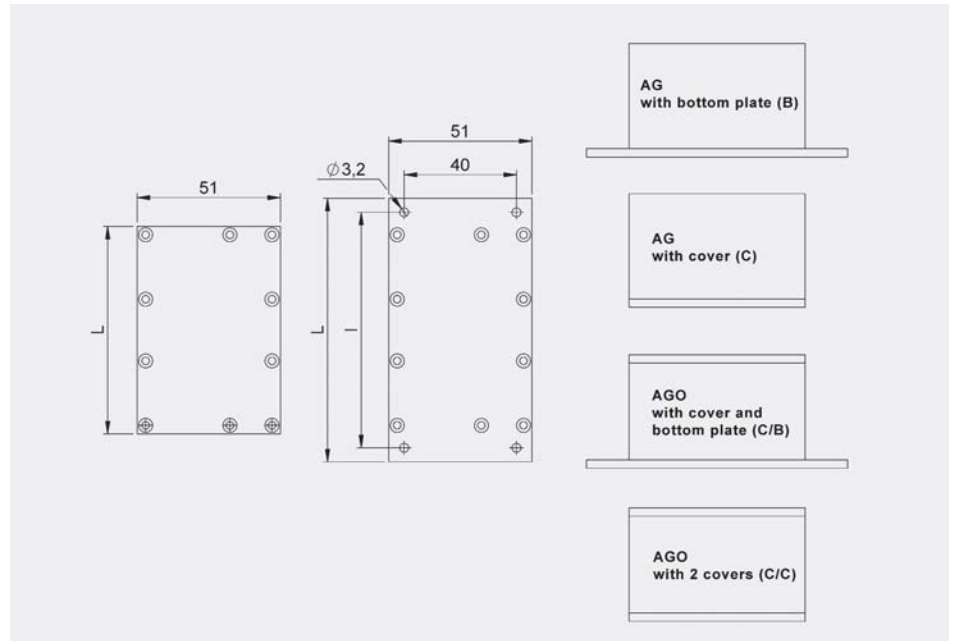


AGO(pen) series

The circuit board is accessible from both sides after mounting.



Dimensions of covers and bottom plates (in mm)

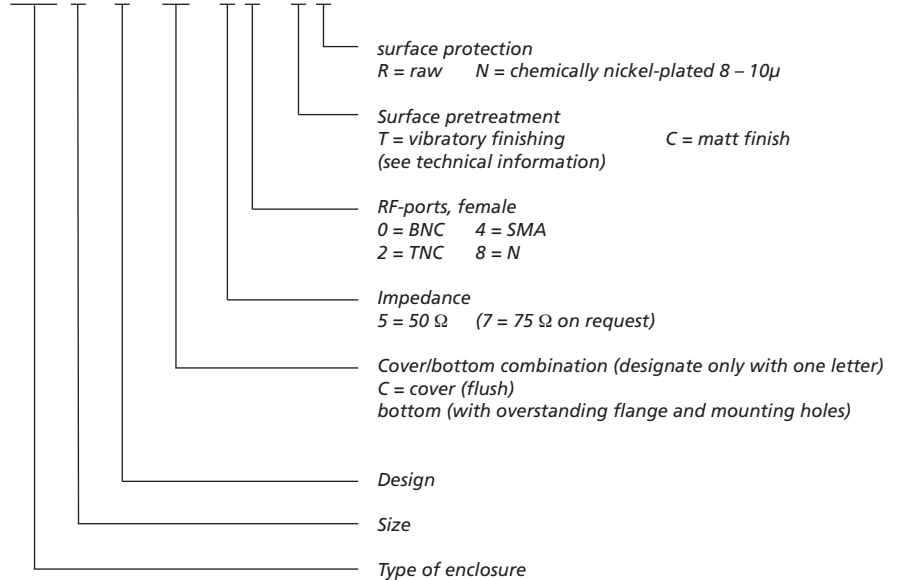


Dimensions of cover plates and bottom plates in mm

Enclosures	bottom plate type						cover type					
	L	x	B	x	H	l	b	L	x	B	x	H
AG 1	62	51	2	52	40	C1*	41,8	51	2			
AG 2	94	51	2	84	40	C2*	74,0	51	2			
AG 3	125,5	51	2	115,5	40	C3*	105,5	51	2			
AG 4	157	51	2	147	40	C4*	137,0	51	2			
AGO 1	62	51	2	52	40	C1	41,8	51	2			
AGO 2	94	51	2	84	40	C2	74,0	51	2			
AGO 3	125,5	51	2	115,5	40	C3	105,5	51	2			
AGO 4	157	51	2	147	40	C4	137,0	51	2			

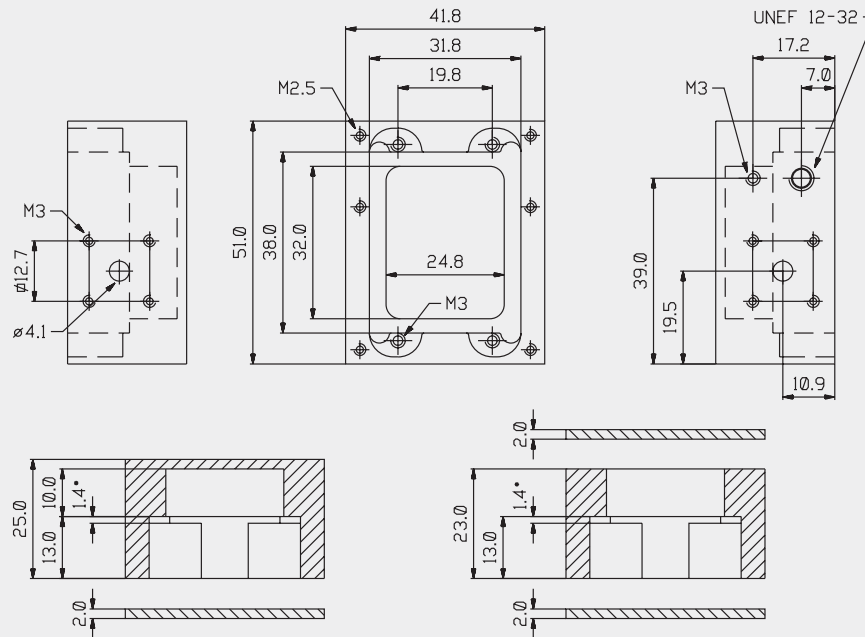
Configuration of model designation

AGO 2 - 1 - CB - 5 4 - C N

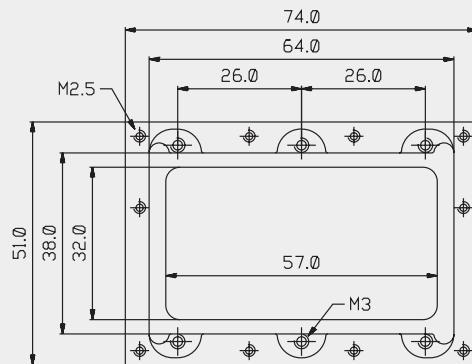


Dimensions, AG/AGO series

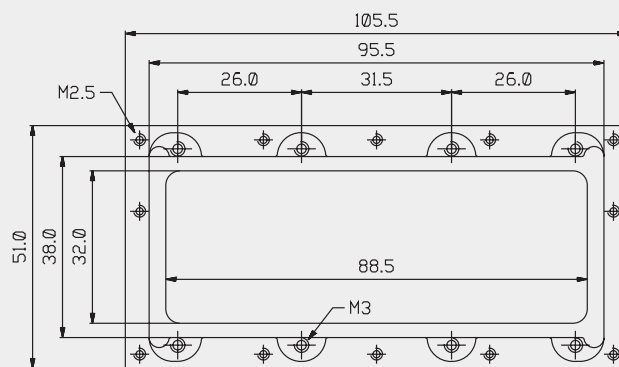
AG/AGO1



AG/AGO2



AG/AGO3



AG/AGO4

